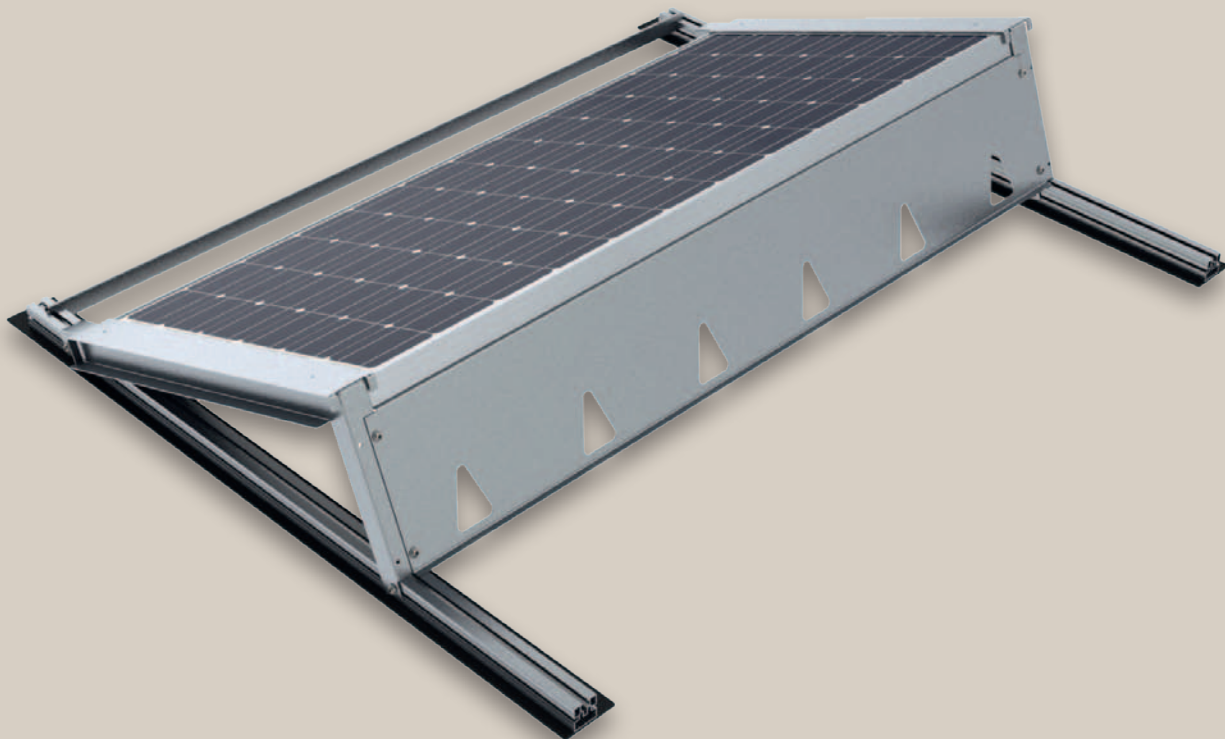
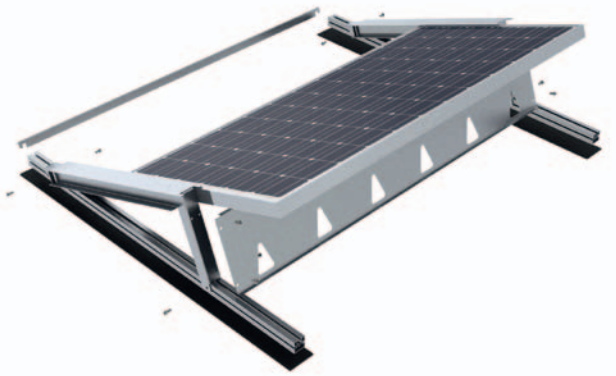


Flat roof system Vario-UltraLight

EXTRA
STREAMLINED.



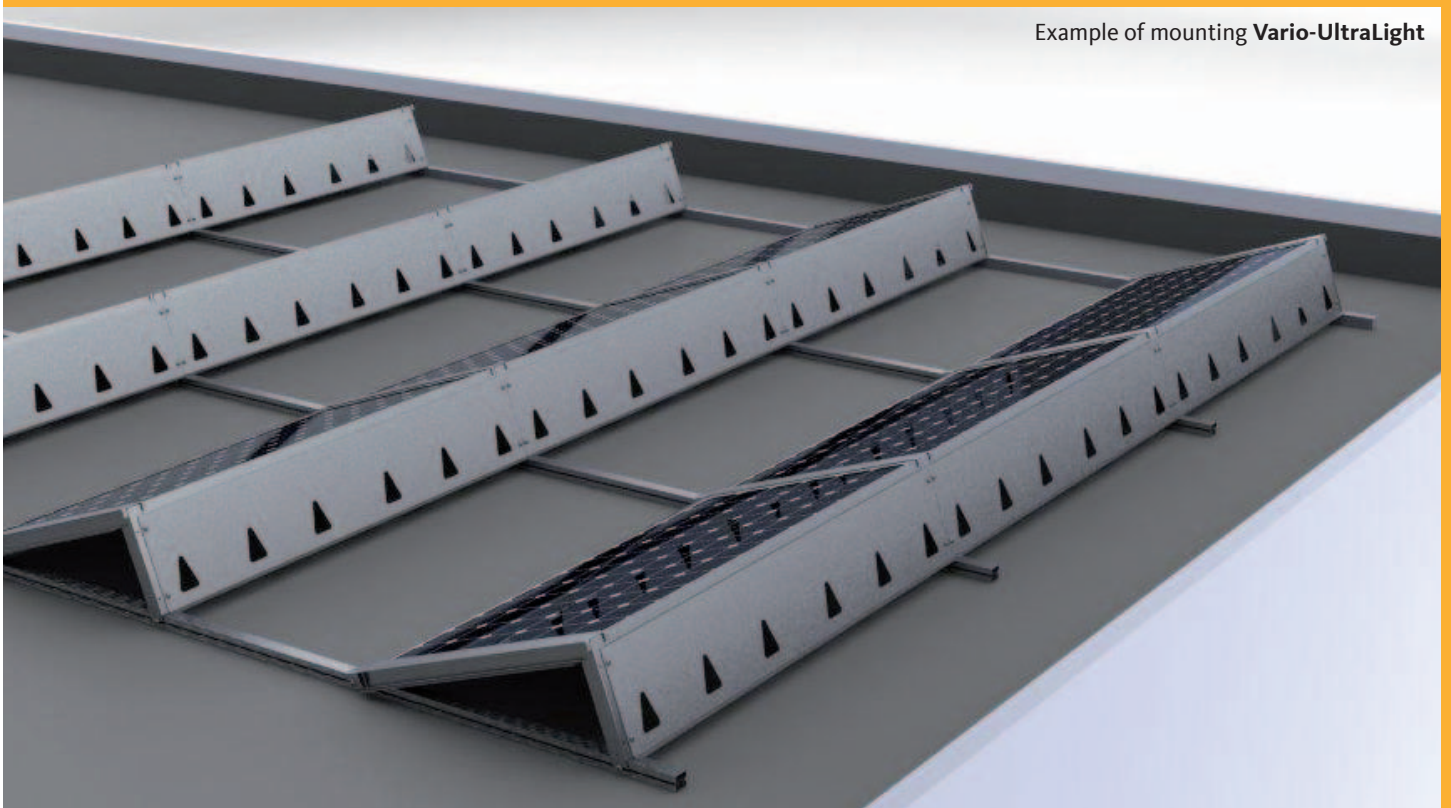


Flat roof system Vario-UltraLight

The basic facts.

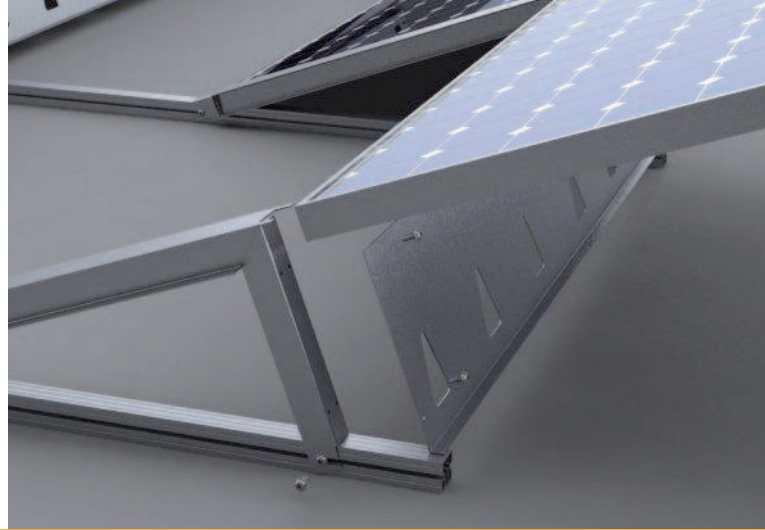
UltraLight is indeed ultra-light – making it possible to install this system even on roofs with a maximum bearing capacity under 9.5 kg/m². The key feature: the assembly system normally works without any difficulty at all. The flow-optimised system uses computer-designed aerodynamic elements. These keep the upward forces so limited that the module field can be prevented from lifting even up to

hurricane speed. Convincingly, the salt spray test has confirmed the quality of our assembly system, so you remain protected from practically all corrosion even after decades of operation in areas with high levels of salt. The Vario-Line mounting profile facilitates rapid assembly on the roof – without time-consuming threading of screws and bolts in the mounting groove.



Example of mounting **Vario-UltraLight**

Especially easy assembly system:
Vario-UltraLight



Vario-Line mounting profile



Our **Knick-Fix** mounting angle for the Vario-Light, developed in-house, can be assembled quickly and easily.

The light-weighter is delivered at full extension to save space and is just folded, erected and fixed in a single operation at installation time.

With our Vario-UltraLight system, you save time in the assembly – and thereby hard cash.

The Knick-Fix mounting angle



Awarded: RAL-certified all along the line

We are one of the few companies in Germany, which are certified in all four categories of the photovoltaic area of RAL-GZ 966.



WHEN IT COMES TO THE ENVIRONMENT, WE DO IN ROME WHAT THE ROMANS DO.

VfL Wolfsburg has won a large environmental partner. With zentralsolar deutschland, the Bundesliga competitor has entered into cooperation within the framework of its Corporate Social Responsibility Activities (CSR).



AND THIS IS HOW IT'S DONE:

1. Bend the Knick-Fix mounting angle by 90° and fix the Vario-Line 45T mounting with the tribular screw.
2. Affix the aerodynamic sheet to the back.
3. Insert the module and secure with the formed sheet.
4. Finished!



You can rely on our qualified Service Partners:

zentralsolar
deutschland

ZSD GmbH
zentralsolar deutschland
Pliniusstraße 8
48488 Emsbüren

Tel.: +49 5903 932 02-0
Fax: +49 5903 932 02-99
info@zentralsolar.de
www.zentralsolar.de